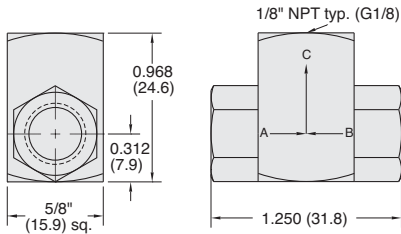


Poppet Type Shuttle Valves



Brass body, Delrin Poppet,
Buna-N seal



Medium: Air, Water or Oil

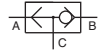
Input Pressure: 300 psig/21 bar - air; 1,000 psig/70 bar - hydraulic

Air Flow: 14 scfm @ 50 psig; 26 scfm @ 100 psig; 630 l/min @ 6 bar

Mounting: Direct or in-line

Operation: Flow from "A" to "C" or "B" to "C"

Pressure to Shift: 1/2 psig approx.



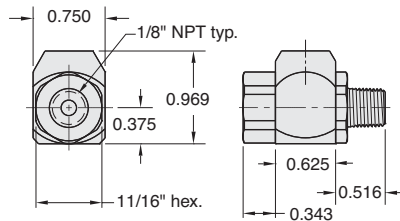
Note: Shuttle valves should not be used as a pressure selector

Part No.	Description
<u>MJSV-1</u>	Poppet Shuttle Valve, 1/8" NPT
<u>MJSV-1-MG</u>	Poppet Shuttle Valve, G1/8

J-Series Shuttle Valves



Part No.
ISV-2FPE



Poppet type shuttle
(double check) valve.
Brass body, stainless
steel shuttle, Buna-N
seal

Medium: Air, Water or Oil

Input Pressure: 300 psig max.

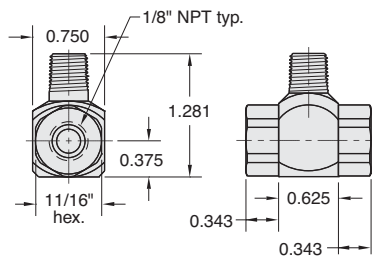
Air Flow: 30 scfm @ 50 psig
50 scfm @ 100 psig

Mounting: Direct or in-line

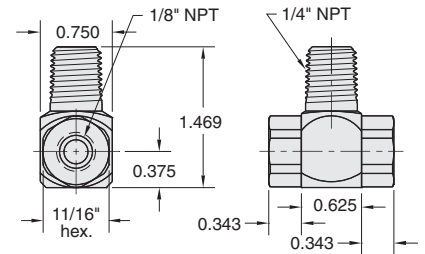
Pressure to Shift: 1 psig approx.



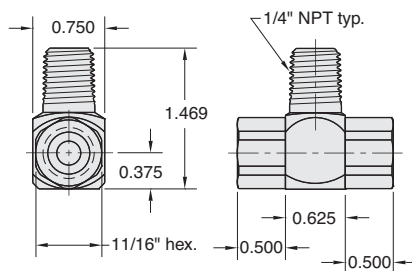
Part No.
ISV-2PFE



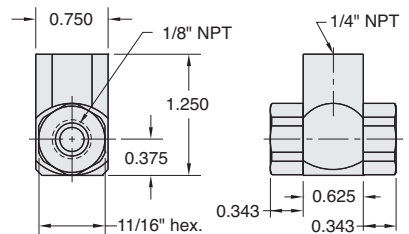
Part No.
ISV-2WFF



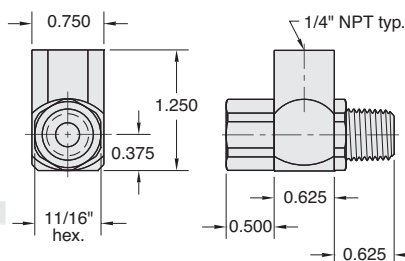
Part No.
ISV-2WYY



Part No.
ISV-2YFF



Part No.
ISV-2YYY



Part No.
ISV-2YYY

